

Grover Park Consulting

Read Me First — Dish Installations

Free Software Disclaimer

This is a free 30 day trial of software provided by *Grover Park Consulting*. It may be freely used on a single workstation during the 30 day trial period. It may also be freely distributed to others provided that no charge above the cost of distribution is levied, and that this disclaimer is always attached to it.

- The author grants you a license to use this software for a period of 30 days from the date of installation on your workstation.
- The program is provided *as is* without any guarantees or warranty as to performance, merchantability, fitness for a particular purpose, or any other warranties whether expressed or implied.
- The author has made every effort to find and correct any bugs in the free software program. By installing this software on your workstation, you agree that the author is not responsible for any damage or losses of any kind caused by the use or misuse of the programs
- The author is under no obligation to provide support, service, corrections, or upgrades to the free software program.
- These exclusions and limitations may not apply in all jurisdictions. You may have additional rights and some of these limitations may not apply to you.

Downloading and Installing Dish Installations[®]

The application in this zip file is an MS Access[®] 2002 (XP) application. It will work for 30 days from the date you install it. To install and use it, you must have a fully licensed copy of MS Access 2002 on your PC. Contact [GPC Data](#) if you want to discuss obtaining a version of the application in an earlier version of Access. A stand-alone version, which does not require you to have MS Access on your PC, is being developed for purchase in the near future. Contact [GPC Data](#) for details.

Downloading the Application

If you haven't done so yet, download the zip file containing the application files from [our website](#). You can either save the zip file to your hard drive and open it from there, or you can open it from the website.

We strongly recommend that you create a folder for the application on our hard drive and save the zip file there. You can delete the zip file later if you want. You will need the folder to save the application files anyway.

Double-click on the zip file to open and view the files in it.

Where to Place the Files

If you have not already done so, create a folder on your hard drive. Give the folder a name like "Installations", or "DishInstallations". Extract the application files to it.

The application itself consists of two files: *Installations.mde* and *InstallationsBE.mde*, along with the application icon, *SATLITE2.ico*. All three should be in the same folder on your hard drive.

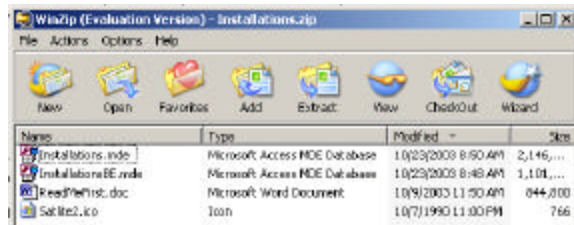


Figure 1. Zip File Contents

With the files extracted to your folder, you can create a short-cut to the application and place it on the desktop by right-mouse clicking on *Installations.mde*. Windows will place the shortcut on the desktop so that you can launch the application from there.

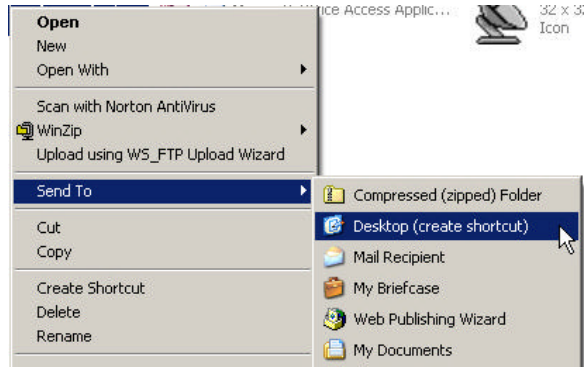


Figure 2. Create a Desktop Shortcut

You can also launch the application by double-clicking on *Installations.mde* in the folder.

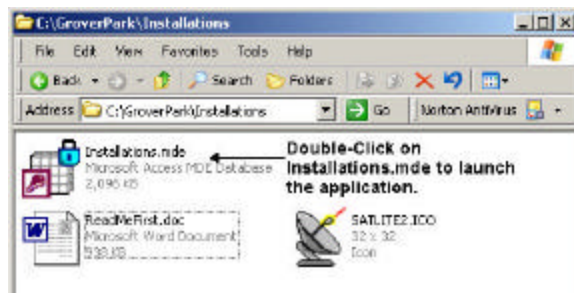


Figure 3. Double-Click to Open Application

That will open your copy of MS Access 2002[®]. Access will then launch the application itself.